



GMT MONTHLY MEMBERSHIP PROGRESS REPORT

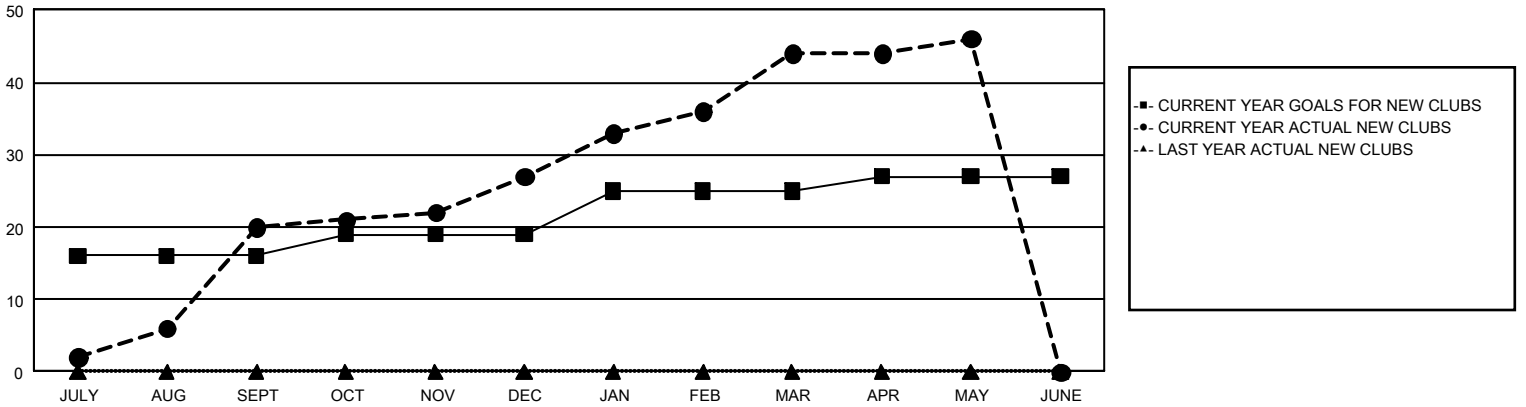
GAT Constitutional Area 5 - MD 300 Taiwan

Results as of: 5/31/2024

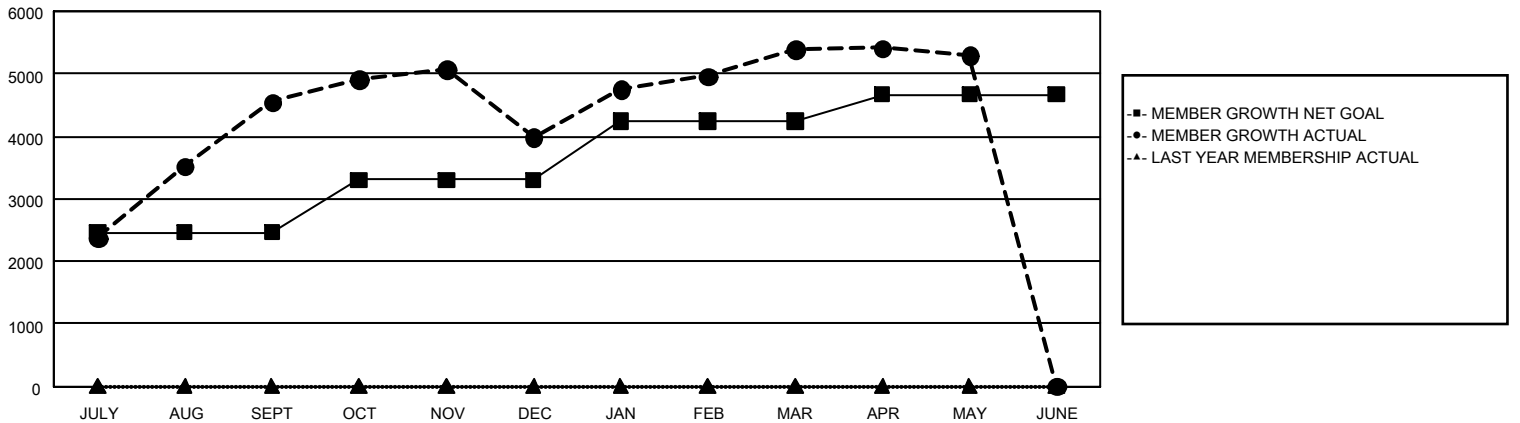
REPORT DOES NOT INCLUDE CLUBS IN UNDISTRICTED AREAS.

Clubs				Members			
RESULTS FOR 2023-2024				RESULTS FOR 2023-2024			
QUARTER	NEW CLUB GOAL	NEW CLUBS	DROPPED CLUBS	QUARTER	MEMBER GROWTH NET GOAL	MEMBER GROWTH ACTUAL	DROPPED MEMBERS ACTUAL (including transfers)
JULY/AUG/SEPT	16	20	3	JULY/AUG/SEPT	2,466	5,933	872
OCT/NOV/DEC	3	7	5	OCT/NOV/DEC	836	1,097	1,577
JAN/FEB/MAR	6	17	1	JAN/FEB/MAR	938	1,753	226
APR/MAY/JUNE	2	2	6	APR/MAY/JUNE	430	315	365

GOALS AND ACTUAL NEW CLUBS CUMULATIVE



GOALS AND ACTUAL MEMBERS CUMULATIVE



DROPPED CLUBS: 15	1,094 CLUBS OF 1,222 ADDED 1 OR MORE NEW MEMBERS	<u>GENDER DISTRIBUTION</u> MALE 30,401 (65.95%) FEMALE 15,680 (34.02%)
<u>DROPPED MEMBERS</u> DECEASED 81 CLUB CANCELLED 60 OTHER 2,900 <hr/> TOTAL 3,041	CLICK HERE FOR CUMULATIVE MEMBERSHIP DATA	TOTAL FAMILY UNIT MEMBERS 5,400 FAMILY MEMBERS PAYING HALF DUES 3,224